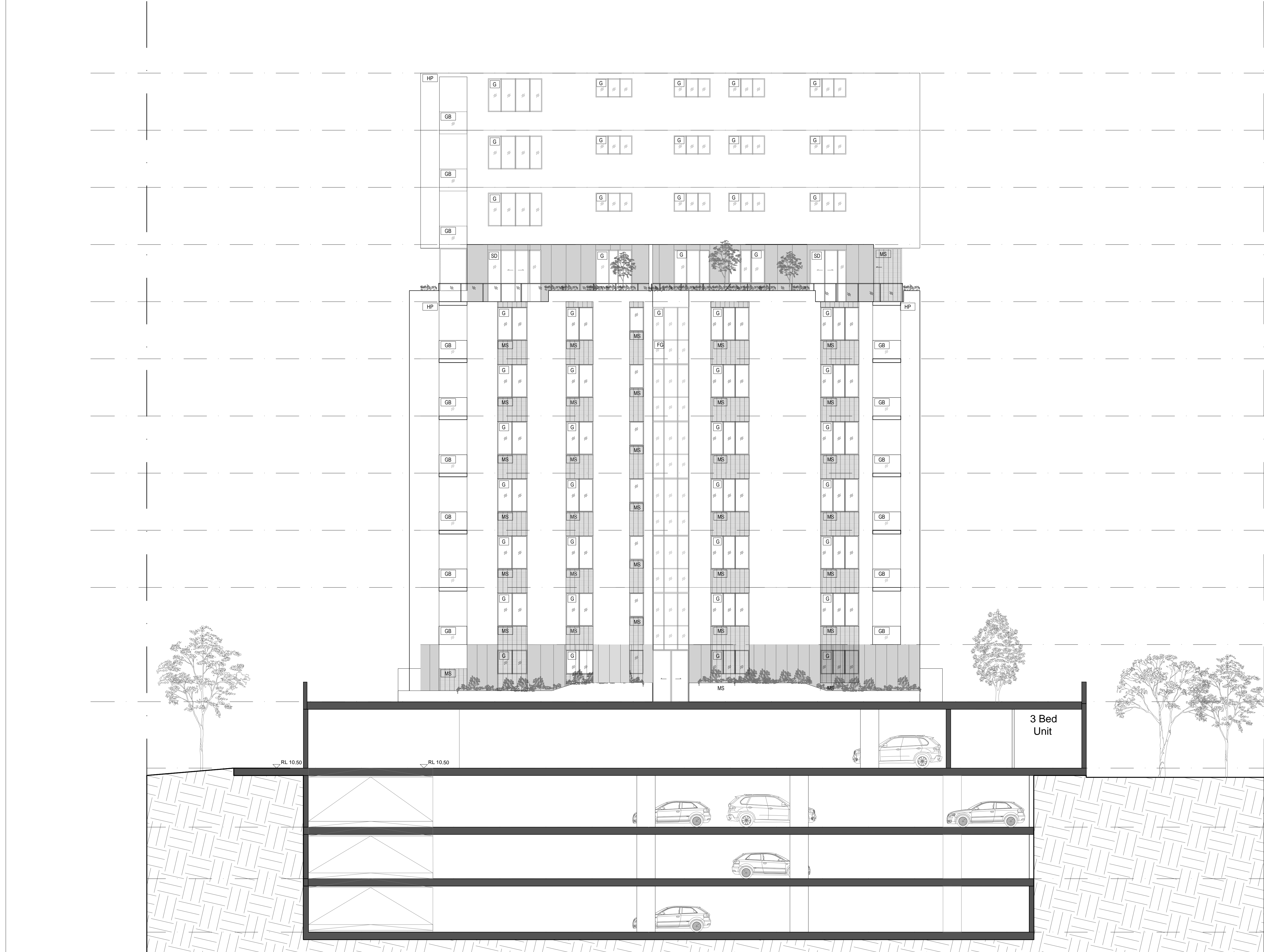


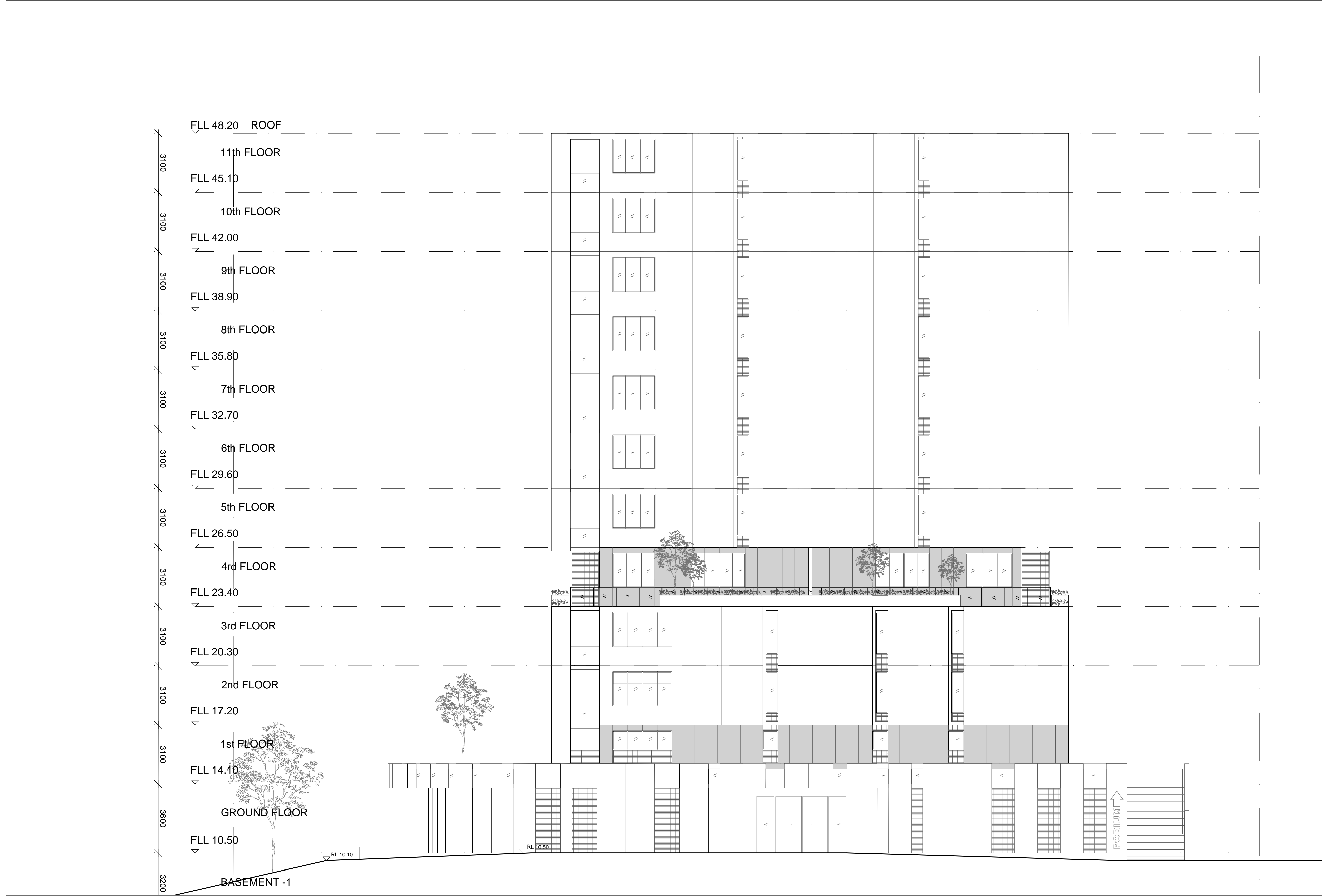
ISSUE	DATE	AMENDMENT
A	29.10.14	ISSUE TO COUNCIL
B	09.06.15	ISSUE TO COUNCIL - REMOVAL OF ONE STORY FROM BLOCK D, ADDITION OF TWO LEVELS TO BLOCK A
C	07.09.15	ISSUE TO COUNCIL - REMOVAL OF ONE STORY FROM BLOCK D, REMOVAL OF ONE LEVEL FROM BLOCK A, INCREASE IN BUILDING SEPARATION BETWEEN BLOCK B AND C





PARAPET  
FLL 48.20 ROOF  
11th FLOOR  
FLL 45.10  
10th FLOOR  
FLL 42.00  
9th FLOOR  
FLL 38.90  
8th FLOOR  
FLL 35.80  
7th FLOOR  
FLL 32.70  
6th FLOOR  
FLL 29.60  
5th FLOOR  
FLL 26.50  
4th FLOOR  
FLL 23.40  
3rd FLOOR  
FLL 20.30  
2nd FLOOR  
FLL 17.20  
1st FLOOR  
FLL 14.10  
GROUND FLOOR  
FLL 10.50  
BASEMENT -1  
FLL 7.30  
BASEMENT -2  
FLL 4.50  
FLL 1.60

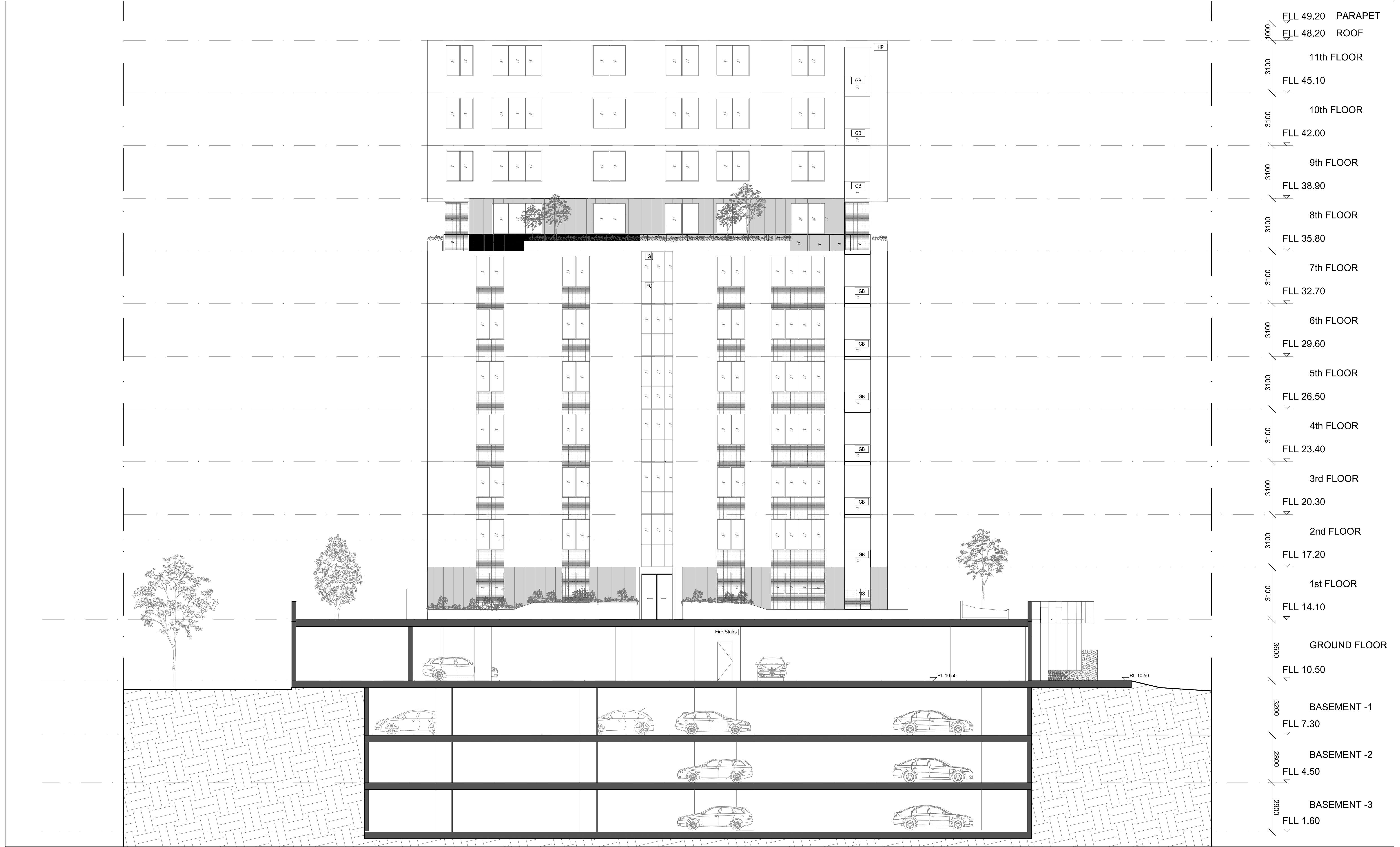




ISSUE	DATE	AMENDMENT
A	29.10.14	ISSUE TO COUNCIL
B	09.06.15	ISSUE TO COUNCIL - NO CHANGE
C	07.09.15	ISSUE TO COUNCIL - REMOVAL OF ONE STORY FROM BLOCK D; REMOVAL OF ONE LEVEL FROM BLOCK A; INCREASE IN BUILDING SEPARATION BETWEEN BLOCK B AND C.

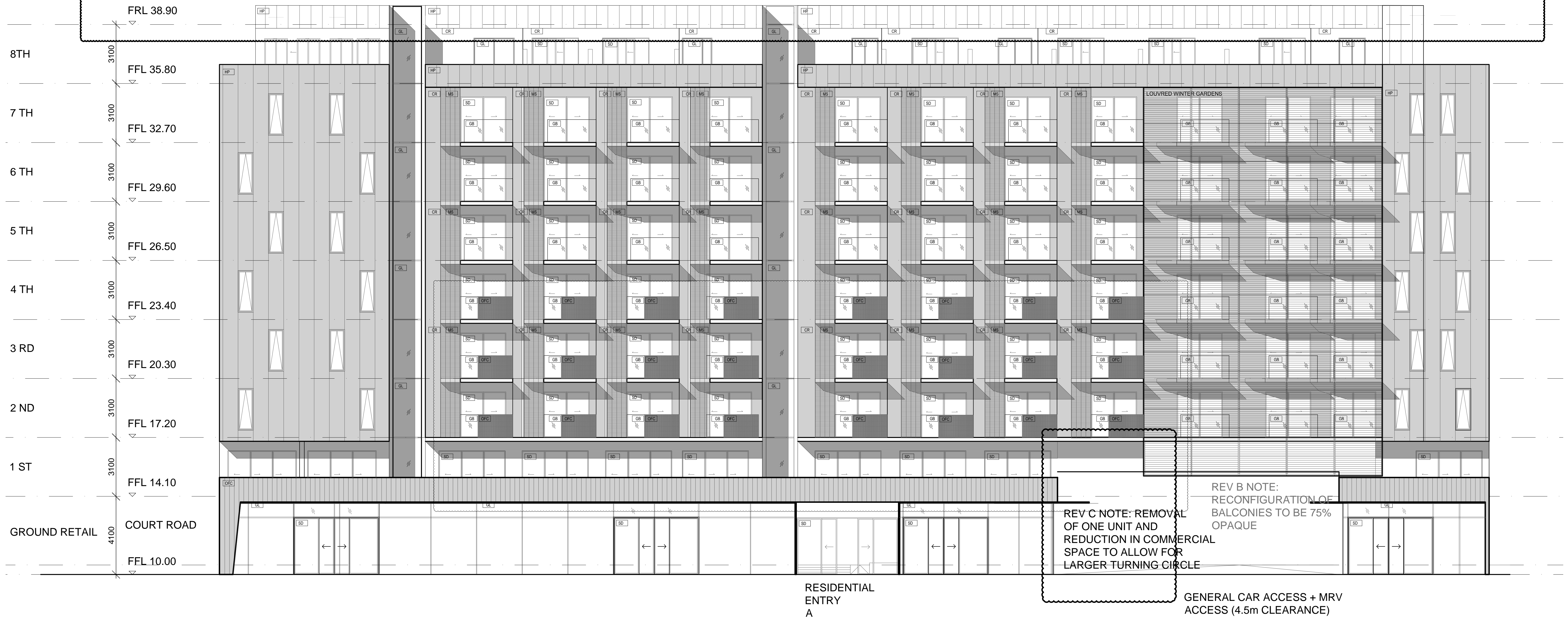
DRAWING TITLE:	SKETCH DOCUMENT
BLOCK C - EAST ELEVATION	

CLIENT: TALLAHON PTY LTD	JOB No: 1411	SCALE AT A1: 1:100	REVISION: C
--------------------------------	-----------------	-----------------------	----------------



REV B NOTE: ADDITION OF  
ONE STOREY ON BLOCK A

REV C NOTE: REMOVAL OF  
ONE STOREY ON BLOCK A



REV B NOTE:  
RECONFIGURATION OF  
BALCONIES TO BE 75%  
OPAQUE

REV C NOTE: REMOVAL  
OF ONE UNIT AND  
REDUCTION IN COMMERCIAL  
SPACE TO ALLOW FOR  
LARGER TURNING CIRCLE

GENERAL CAR ACCESS + MRV  
ACCESS (4.5m CLEARANCE)

REV B NOTE: ADDITION OF  
ONE STOREY ON BLOCK A  
REV C NOTE: REMOVAL OF  
ONE STOREY ON BLOCK A



RESIDENTIAL ACCESS A

LEGEND:

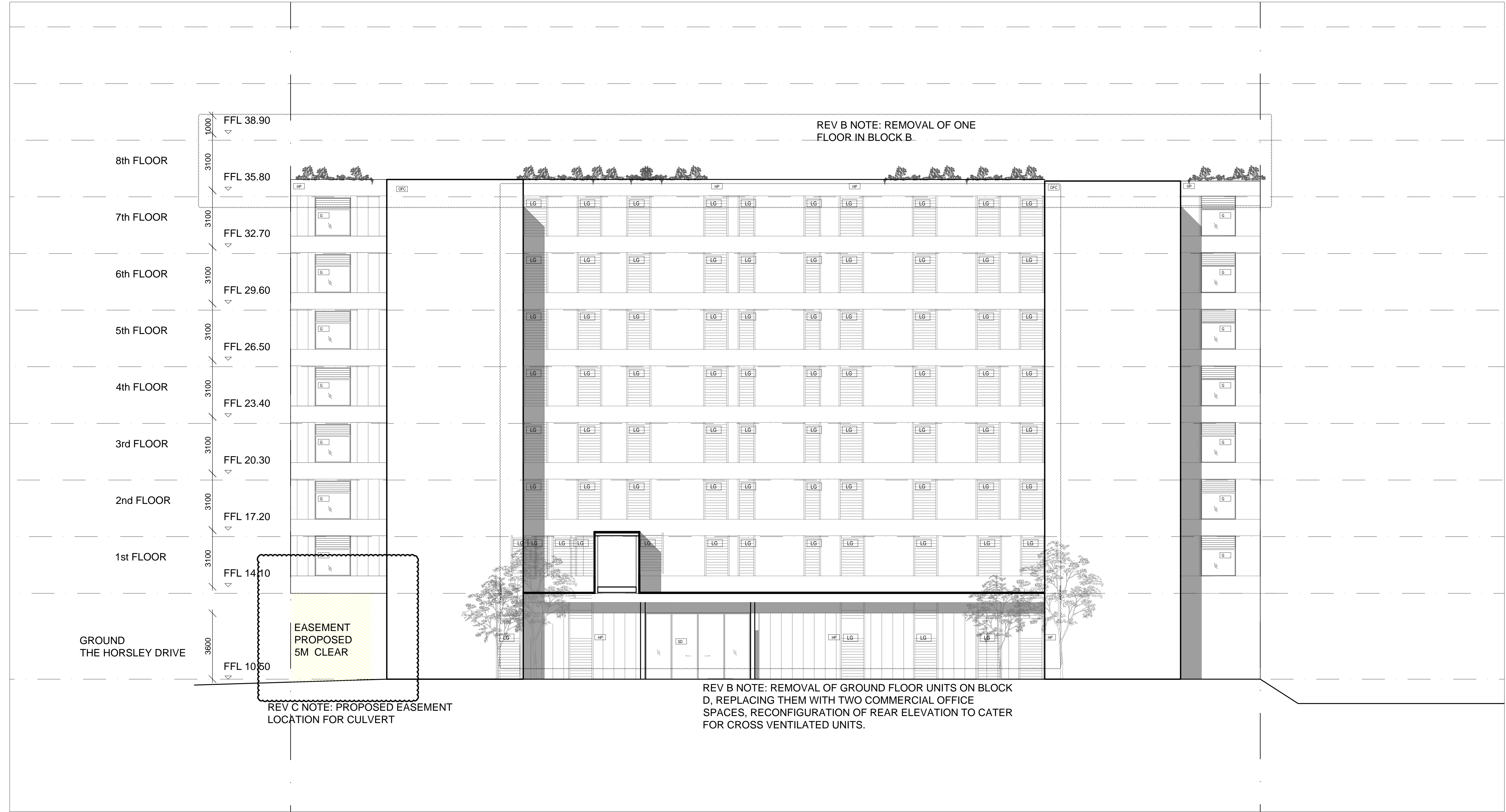
GL	GLAZING
CR	CONCRETE RENDER
OPC	OFF-FORM CONCRETE
HP	HEBEL PANEL
MS	MESH SCREEN
BD	SLIDING DOOR
CW	CASE WINDOWS
BF	BIFOLD DOOR

ISSUE	DATE	AMENDMENT
A	29.10.2014	ISSUE TO COUNCIL
B	11.06.2015	RE-ISSUE TO COUNCIL: ADDITION OF ONE STOREY ON BLOCK B, AMENDMENT TO BALCONIES FOR THE FIRST 5 LEVELS TO BE 75% OPAQUE
C	07.09.2015	RE-ISSUE TO COUNCIL: REMOVAL OF ONE STOREY, REMOVAL OF ONE GROUND FLOOR UNIT AND SHIFTING OF COMMERCIAL SPACE









ISSUE	DATE	AMENDMENT
A	28-10-14	ISSUE TO COUNCIL
B	11-06-15	RE-ISSUE TO COUNCIL: REMOVAL OF ONE STOREY, REMOVAL OF GROUND FLOOR UNITS IN BLOCK D, INTRODUCTION OF 2 COMMERCIAL OFFICE SPACES ON GROUND FRONTING THE HORSLEY DRIVE, RECONFIGURATION OF REAR FACADE TO CATER TO CROSS VENTILATED UNITS
C	07-09-15	RE-ISSUE TO COUNCIL: PROPOSED EASEMENT FOR DRAINAGE CULVERT TO NORTH CORNER OF THE HORSLEY DRIVE - CHANGE GROUND FLOOR OF BLOCK D

DRAWING TITLE:	NOT FOR CONSTRUCTION
WESTERN BLOCK D (HORSLEY DRIVE) ELEVATION	
CLIENT: TALLAHON PTY LTD	JOB No: 1411
	SCALE AT A1: 1:100

DRAWING No:
DA209
REVISION: C